

5.8m FLY FISHER

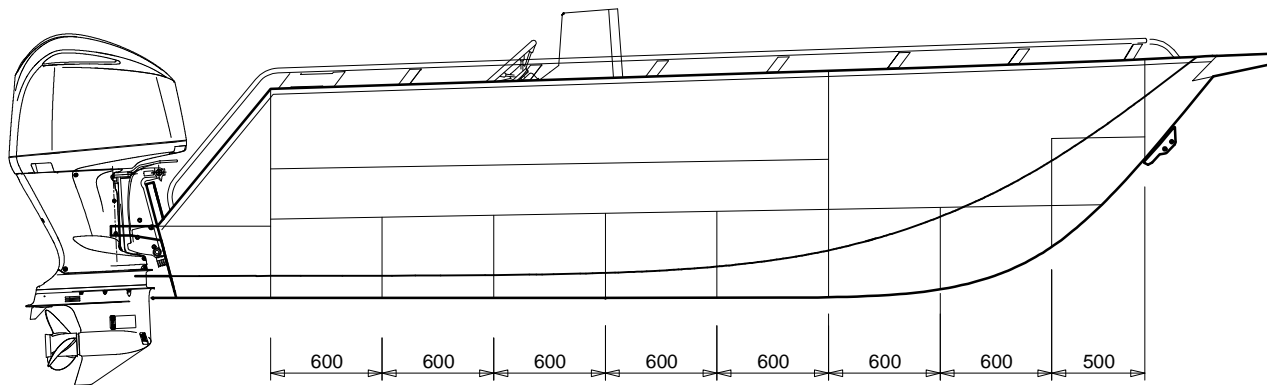
GENERAL ARRANGEMENT

PRINCIPAL PARTICULARS

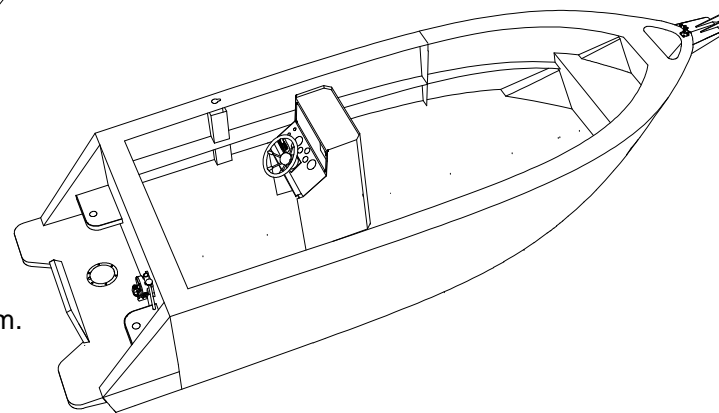
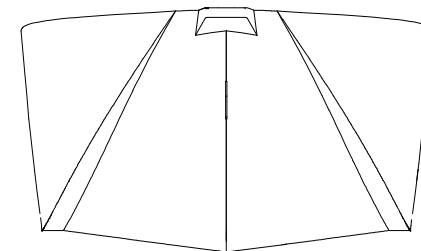
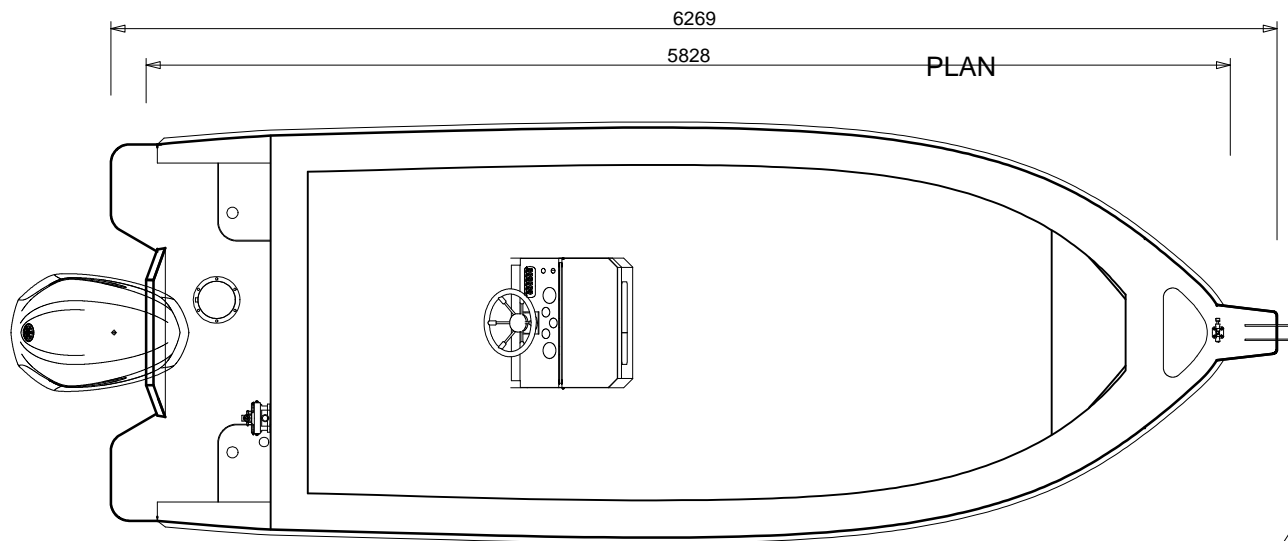
LOH: 5.80 m (Hull Only)
 BEAM: 2.25m
 DEPTH: 1.2m
 DRAFT: 0.250m (HULL)
 D/RISE: 8° @ TRAN.
 POWER: 150HP

Boat hull to be foam filled.

PROFILE



PLAN



ACTUAL KIT MIGHT DIFFER FROM PICTURES SHOWN

www.platealloy.com

Note: Layout can be customised by owner
 Owner Advised to provide sun protection

AUSTRALIAN BUILDERS PLATE

BUILDER "YOUR NAME"

HIN AU- "SEE REGISTRATION"

Max 170 hp
 275 kg

Max 5 400 kg

Max 739 kg

Buoyancy BASIC Flotation

Alteration of the boat's hull or permanent fittings may invalidate the particulars on this plate.

A REDUCTION IN MAXIMUM NUMBER OF PERSONS MUST BE MADE IN ADVERSE WEATHER CONDITIONS OR WHEN ON THE OPEN SEA.

- Design in compliance with AS1799-1 2009
- Structure in accordance with ISO 12215
- material: - Bottom, Chine, Transom & Stringers, 5mm 5083 aluminium.
- Sides, Deck, etc.. 4mm 5083 Aluminium
- Builders plate, Jig, Drawings & Photo CD included with kit.
- Bollards, Scuppers, Inspection port & Drain plug included in the kit.
- 5 days per week helpdesk available
- Customization available.
- Flotation foam & most fit out parts available, check catalogue for pricing.
- HIN number engraved in kit & registered.

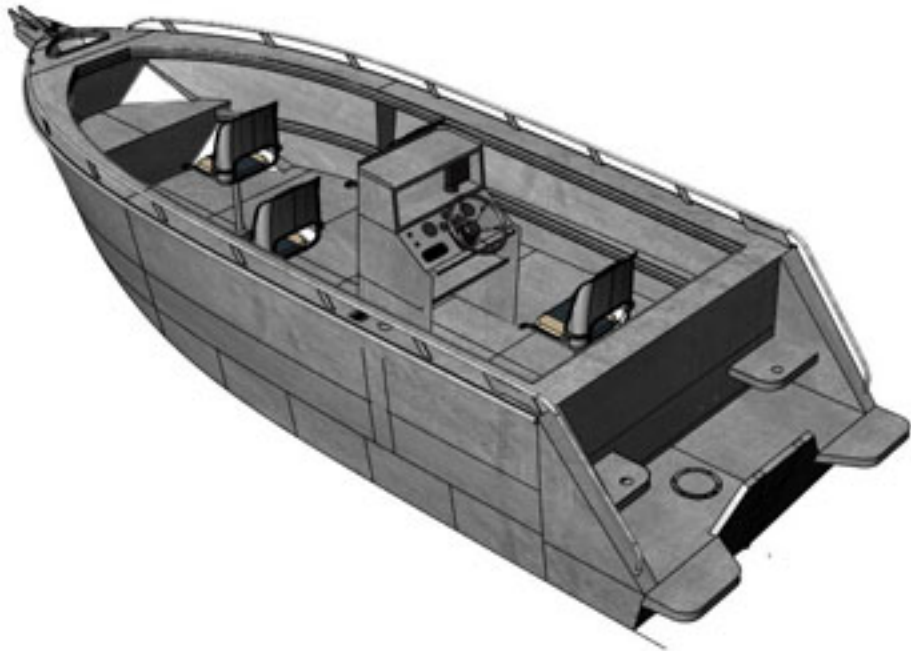


5.8 FLY FISHER



PLATE ALLOY

www.platealloy.com



Different Console Option available, Custom change include casting deck option.