

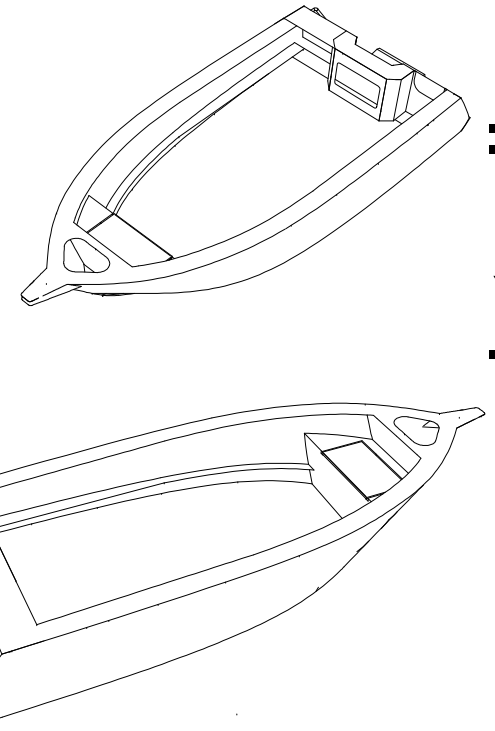
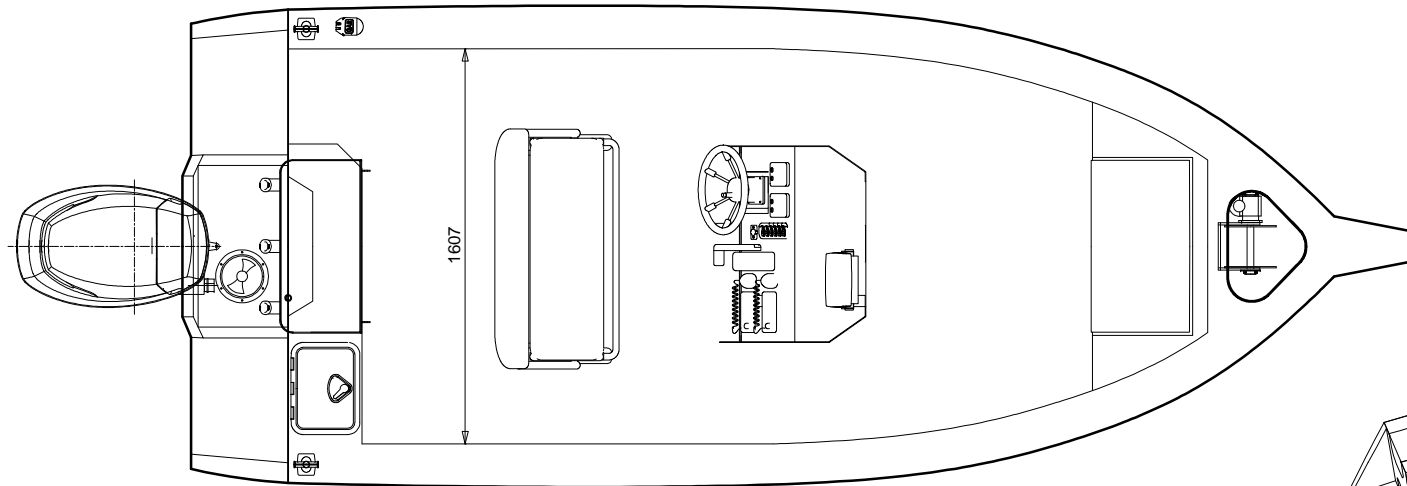
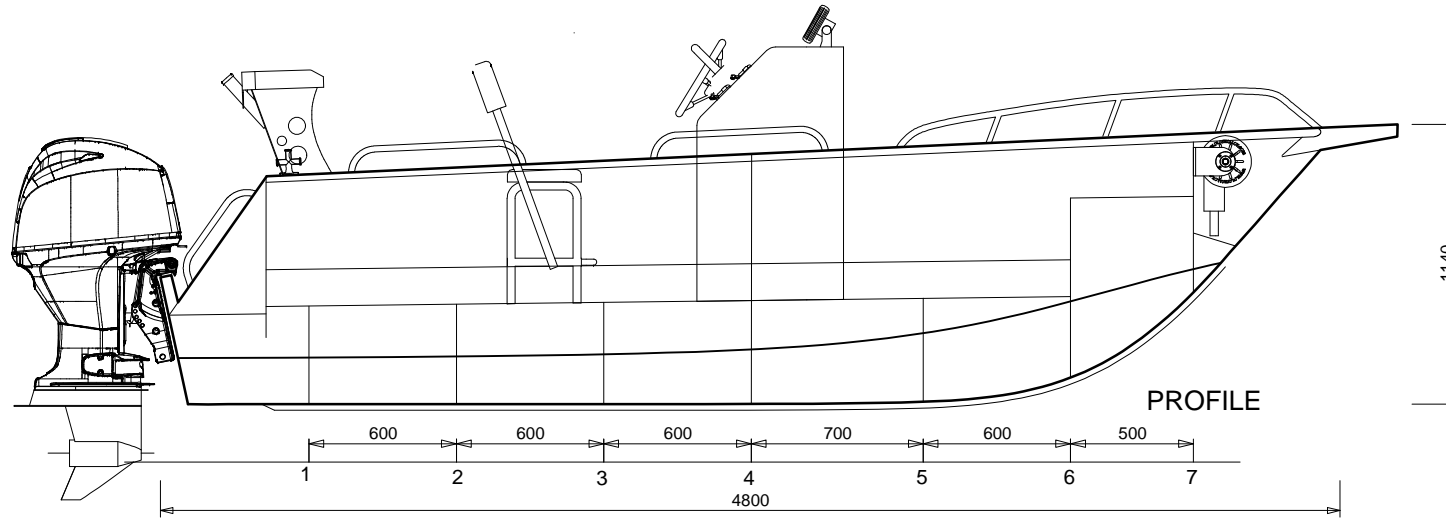
4.8m Centre Console

GENERAL ARRANGEMENT

PRINCIPAL PARTICULARS

LOA:	5.0 m
LENGTH:	4.80 m
BEAM:	2.0 m
DEPTH:	1.1 m
DRAFT:	0.23m (HULL)
D/RISE:	15° @ TRAN.
DISPL:	680kg DRY -w- 70HP
ENG:	20" (LONG)

BOAT HULL TO BE FOAM FILLED.



www.platealloy.com

Note: Layout can be customised by owner.

AUSTRALIAN BUILDERS PLATE

BUILDER "YOUR NAME"

HIN AU- "SEE REGISTRATION"

Max \hat{P} = 90 hp

Max \hat{W} = 270 kg

Max \hat{P} 4 = 360 kg

Max \hat{P} + \hat{P} + \hat{W} = 590 kg

Buoyancy BASIC Flotation

⚠ Alteration of the boat's hull or permanent fittings may invalidate the particulars on this plate.

A REDUCTION IN MAXIMUM NUMBER OF PERSONS MUST BE MADE IN ADVERSE WEATHER CONDITIONS OR WHEN ON THE OPEN SEA.

- Design in compliance with AS1799-1 2009
- Structure in accordance with ISO 12215
- Entire kit 4mm 5083 aluminium.
- Builders plate, Jig, Drawings & Photo CD included with kit.
- Bollards, Scuppers, Inspection port & Drain plug included in the kit.
- 5 days per week helpdesk available
- Customization available.
- Flotation foam & most fit out parts available, check catalogue for pricing.
- HIN number engraved in kit & and registered.

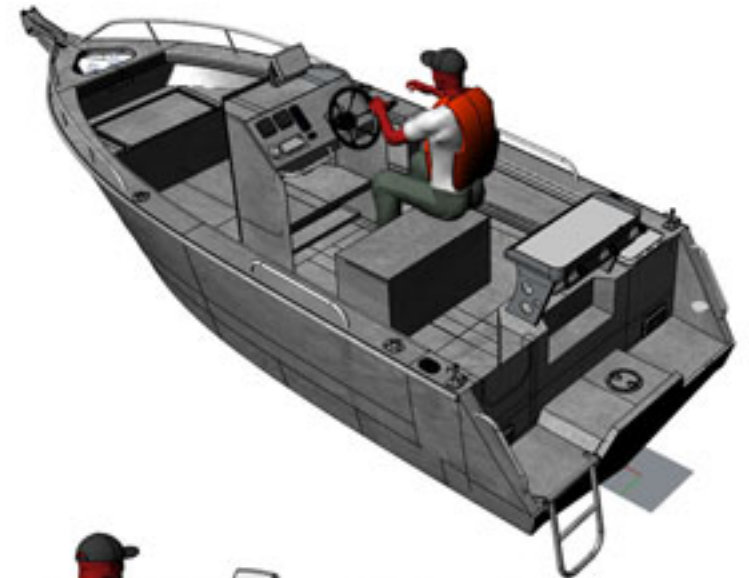


4.8 Centre Console



PLATE ALLOY

www.platealloy.com



Different Console Option available, Custom change include casting deck option.

4.8 Centre Console



PLATE ALLOY

www.platealloy.com

